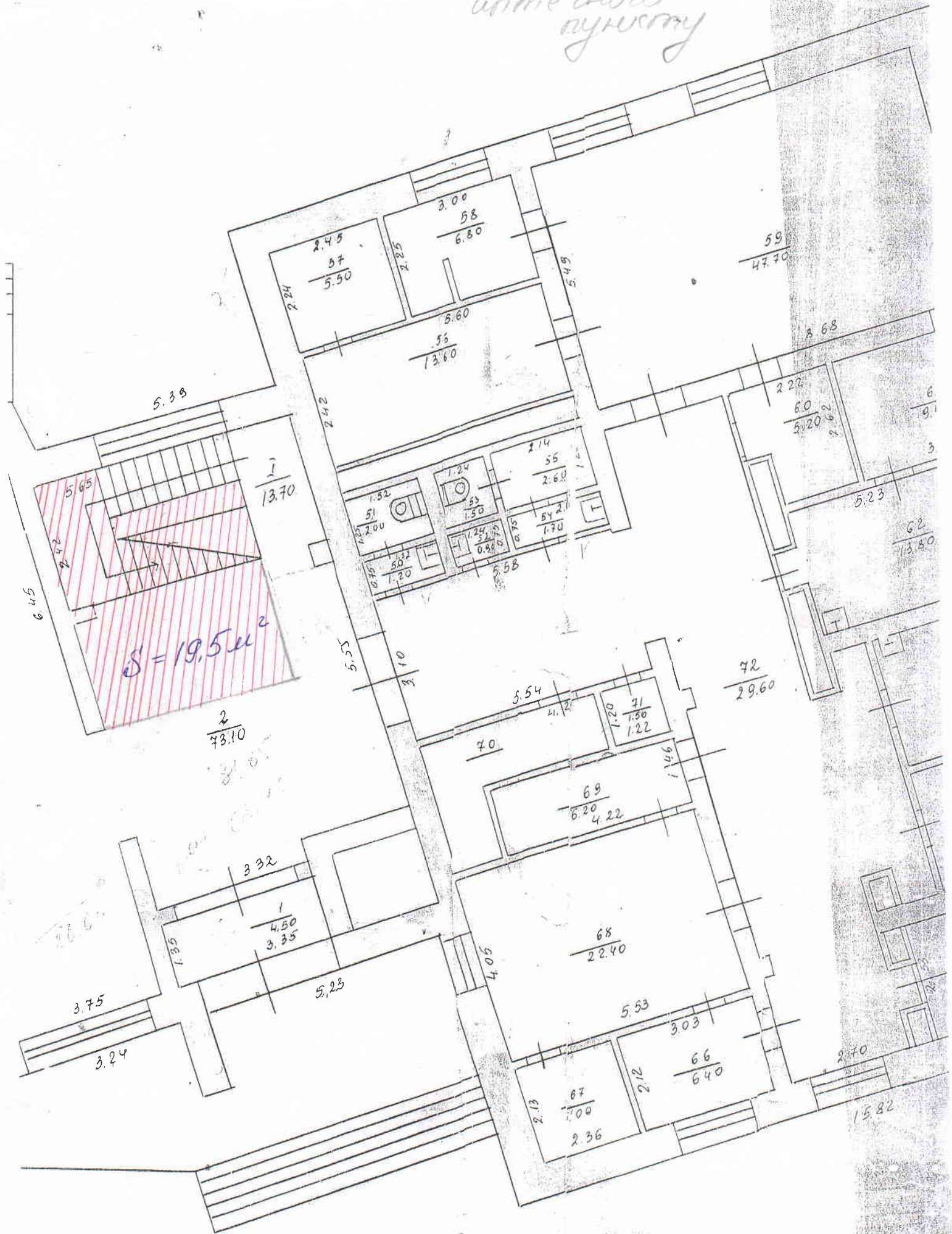


Для Возмещения
антежной
пути



$S = 19.5 \text{ m}^2$

2
73.10

1
13.70

2.45
0.7
5.50

3.00
0.8
6.80

5.60
0.5
13.60

59
47.70

8.68

2.22
6.0
5.20

6

9.1

5.23

3

6.2
13.50

72
29.60

3.54
4.1
7.0

71
1.50
1.22

69
6.20
4.22

68
22.40

3.32

1
4.50
3.35

1.35

5.23

4.05

5.53

3.03

66
6.40

2.70

3.75

3.24

2.13
0.7
2.36

2.12
6.7
6.40

15.82